

Welcome to GEA

Company Portrait & Marine Products
GEA Westfalia Separator & GEA Utilities

MICHAEL FIBBE MAY 2017



Systems from one source



Centrifuges f. HFO, MDO & LO



HFO CatfineMaster®



***ScrubberMaster®**
for scrubber



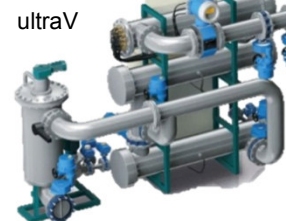
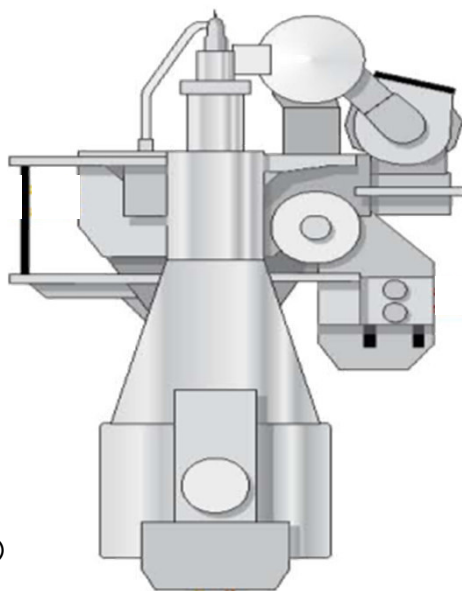
Decanter
for *Membrane
Bioreactor (MBR) Systems



Visco Booster Units Engine
Visco Booster Units Boiler



EnergyMaster®



ultraV



marineX

BallastMaster® ultraV & 250 – 500 m³
BallastMaster® marineX 150 – 1500 m³



BilgeMaster® cleandesign
200 – 5000l/h



SafetyMaster®



SludgeMaster® 300l/h



sea water distiller
evaporator 5-30t/day



Provision refrigeration plant,
Cooling compressors for
refrigerator rooms,
HVAC, etc



GEA Westfalia Separator Visco Booster Units

Fuel Oil Conditioning



- ❖ We offer you Visco Booster Unit from Westfalia Separator
- ❖ For you that means:
 - Tailor made solution
 - The engineering is under the responsibility of Westfalia
 - The unit is ready to run
- ❖ Your benefits are:
 - No resources needed for the engineering
 - The units are designed to the requirement of your engine room
 - You get plug and play solution



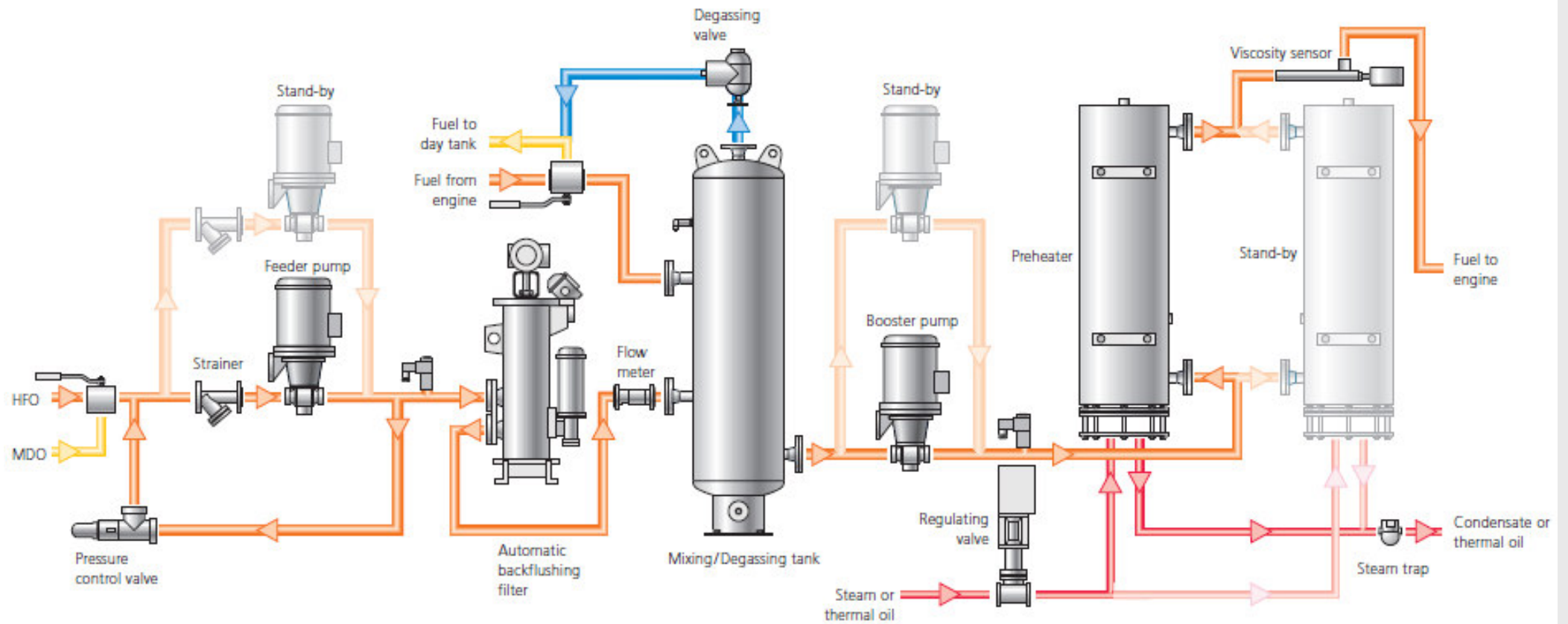
Features of Visco Booster Unit:

- ❖ Achieve the required injection viscosity (10-25 cSt)
- ❖ Provide a constant pressure at inlet of the injection pumps (pressure range from 6-10 bar)
- ❖ Complete Unit and tailor made design
- ❖ Ready to connect
- ❖ Completely piped and wired and in fully accordance with all class requirements



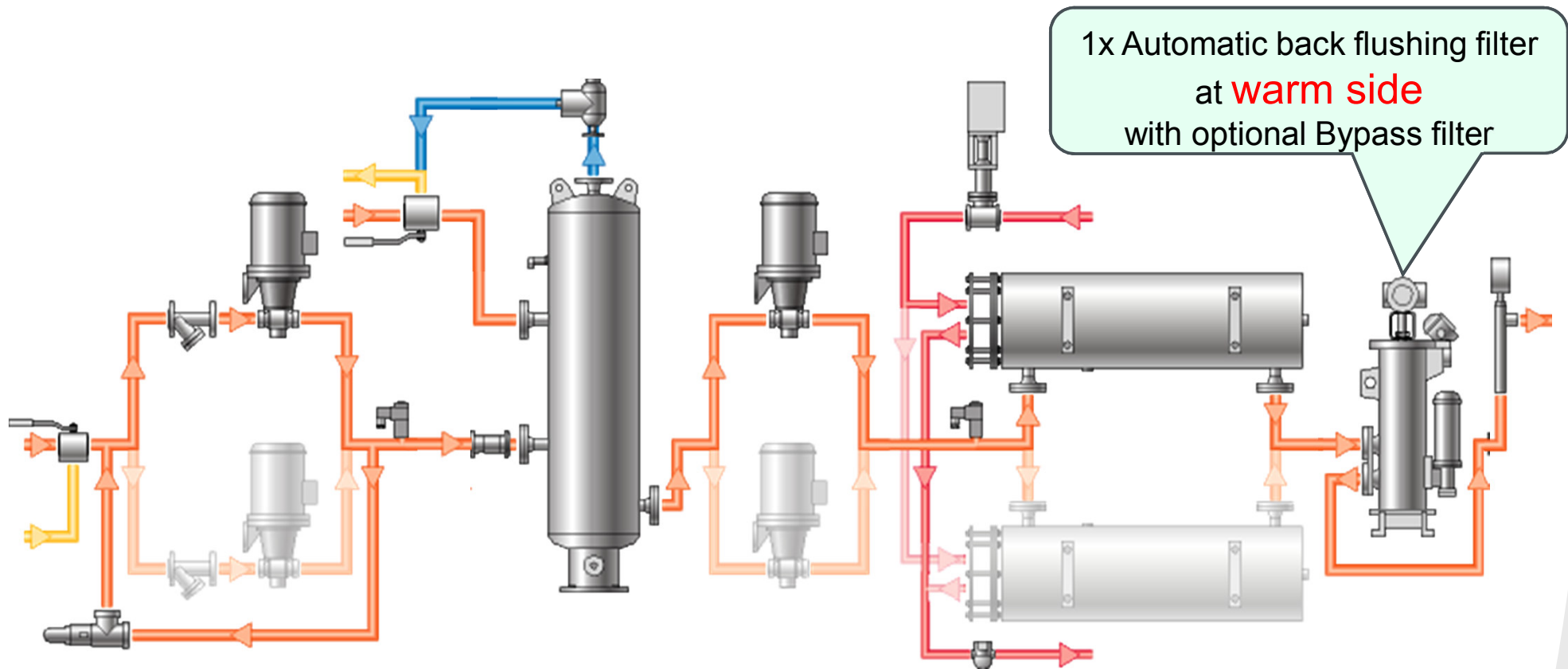
Arrangement of VBU (Standard Marine Design)

Marine design - cold side



Arrangement of VBU (Standard Marine Design)

Marine design – warm side



Fuel oil consumption meter (positive displacement meter)



Consumption totalizer CUB 5

- 8 digit display
- Indication in m^3/h (totalizer) or in l/h (current consumption)
- Resettable

Local indication of consumed fuel oil



Control Cabinet



3-part control cabinet:

- Process control & monitoring
E40 with Graphic Display
- Two independent power supply with restarts function after black out
- Emergency stop button for the compl. Visco Booster Unit
- Feeder and Booster pump control with change over function
- Viscosity and Temperature control (automatic / manual operation)
- Consumption counter
- Selector switch for trace heating
- Indication lights

Technical data of control panel:

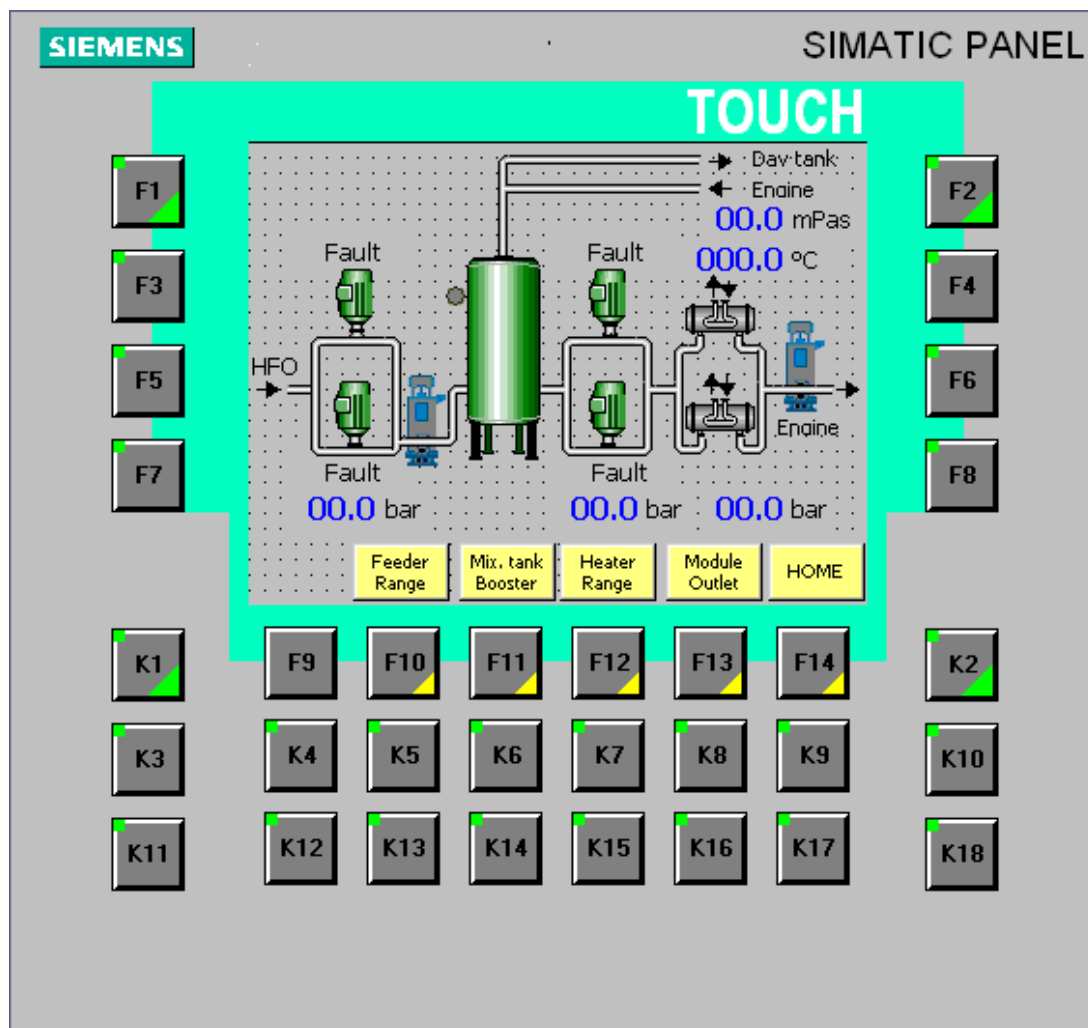
Protection: IP 54

Double In feed system

Ambient temperature up to 45°C

Remote operation

Installation of a 2nd control unit E40 in ECR enables a remote control of our VBU



Functions:

- Start / stop pumps
- Adjusting viscosity / temperature
- Monitoring viscosity / temperature
- etc.

Bus connection
(WS standard: Profibus DP)





engineering for
a better world

